



Advanced Network Monitoring & Alert System

Instant Alerts. Complete Control. Maximum Uptime.



Radius Infotech (P) Ltd.



Pan-India Technology & Security Solutions Provider

19+ Years

Pan India Presence

5 Group Companies

ISO Certified



About

- Established In **2007**.
- Based Out India, HQ At New Delhi.
- Authorized Distribution & Service Partner : Novus, Pentaminds.
- More Than 18+ Years In Field Of Technology & Innovation.
- Part Of Radius Group Of Companies (**Since 1994**).



Group Companies

- Radius Infotech (P) Ltd.
- Radius Infotech Services (P) Ltd.
- Radius Synergies International (P) Ltd.
- Softone Solutions (P) Ltd.
- Xenius Energy Solutions (P) Ltd.



Verticals

- **Residential:** CURONEXT, CYBOSHIELD & Low voltage security system
- **Commercial:** CUROPARK, CUROZAPP, CUROZAPP CYBOSHIELD & CUROSTREAM
- **Retail:** CUROPARK, CYBOSHIELD & CUROSTREAM



Certified

- Ims International Certified **iso 9001:2015**,
- IQC Certified **iso 20243:2018**,
- Ims International Certified **iso 27001:2022**,
- Ims International Certified (**GDPR**)
- **IQC/CMM/034012**

BPR&D Study Of The CCTV System In 5 Cities



Cities	Uptime guarantee check	Cyber security
Hyderabad	PWC (Price water cooper)	Fire wall
Bangalore	SLA (Service level agreement)	-
Indore	Daily checks	-
Jaipur	Daily checks	-
Surat	NMS (For Network Check) / Daily checks	-

Issues Faced Without Network Monitoring



Hardware Security



Securing a CCTV (Closed-Circuit Television) system is crucial to protect sensitive information and ensure the system operates effectively.

Key areas of testing include exposed network services, device communication protocols, physical access to the device's UART, JTAG, SWD, etc., the ability to extract memory and firmware, firmware update process security and storage and encryption of data.

Here are brief requirements for the security of a CCTV system:

- Use tamper-proof camera enclosures and locks.
- Control access with authentication, RBAC, and regular permission reviews.
- Secure data with encryption.
- Update software regularly, disable unused features, and enforce strong passwords.
- Conduct penetration tests to find and fix vulnerabilities.

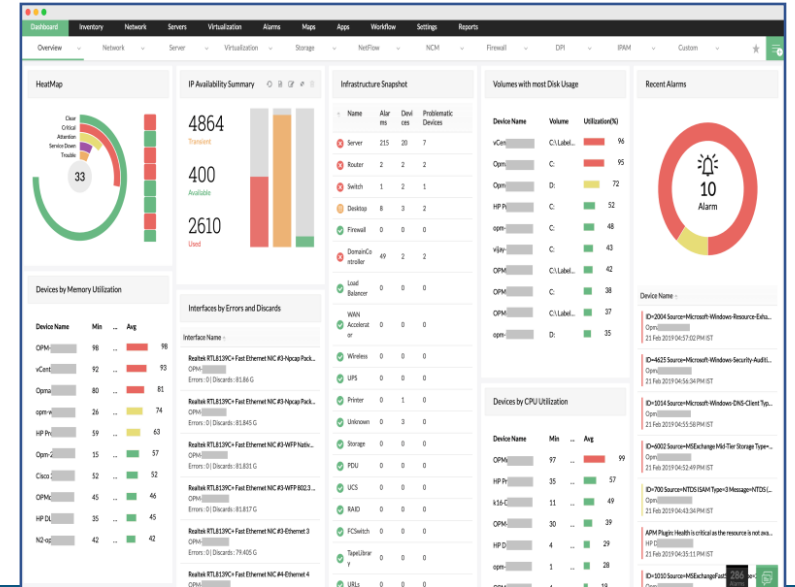
Cyber Security and Network Management



3. While these surveillance technologies undoubtedly offer a range of benefits and are valuable tools for monitoring and security, they also raise certain concerns and risks. Some of the growing risks associated with CCTV systems include data security, privacy breach, hacking and cyber-attack etc. Various incidents have also been reported due to security flaw in the surveillance cameras.

4. The cybersecurity is an ongoing process, so staying vigilant and keeping system up to date with the latest security practices can significantly enhance the security of CCTV system and protect it from potential threats and unauthorized access. In this regard, the following measures are advised to minimize the risk associated with CCTV surveillance system:

Device Heartbeat Monitoring



CYBOSHIELD THE **WATCHDOG**

CYBOSHIELD Round The Clock Device Watchdog

Introduction CYBOSHIELD

A CYBOSHIELD (NMS) is a centralized platform designed to track, analyze, and manage the health and performance of all network devices in real time. It provides complete visibility into routers, switches, firewalls, servers, and connected endpoints, helping organizations detect issues early, prevent downtime, and ensure smooth network operations.

With automated alerts, traffic analytics, and unified dashboards, CYBOSHIELD (NMS) empowers IT teams to maintain a secure, efficient, and high-performing network—while reducing manual workload and troubleshooting time.



Key Features



Multi-tier, web-based platform



Centralized platform for monitoring all network and IP-based devices



Ensures availability, performance, security, and operational visibility



Proactive monitoring of network health



End-to-end visibility of topology



Fast incident detection and escalation



Improved SLA compliance



Automated device discovery



Real-time performance monitoring



Fault detection with instant alerts

Key Features



Live network topology visualization



Alerts via Email, SMS, WhatsApp, Dashboard



Threshold-based alarms (CPU, Memory, Bandwidth, Temperature, etc.)



Tiered escalation (L1/L2/L3)



SLA breach notifications



Device criticality classification (Low / Medium / High)



Automated link discovery



E-Map



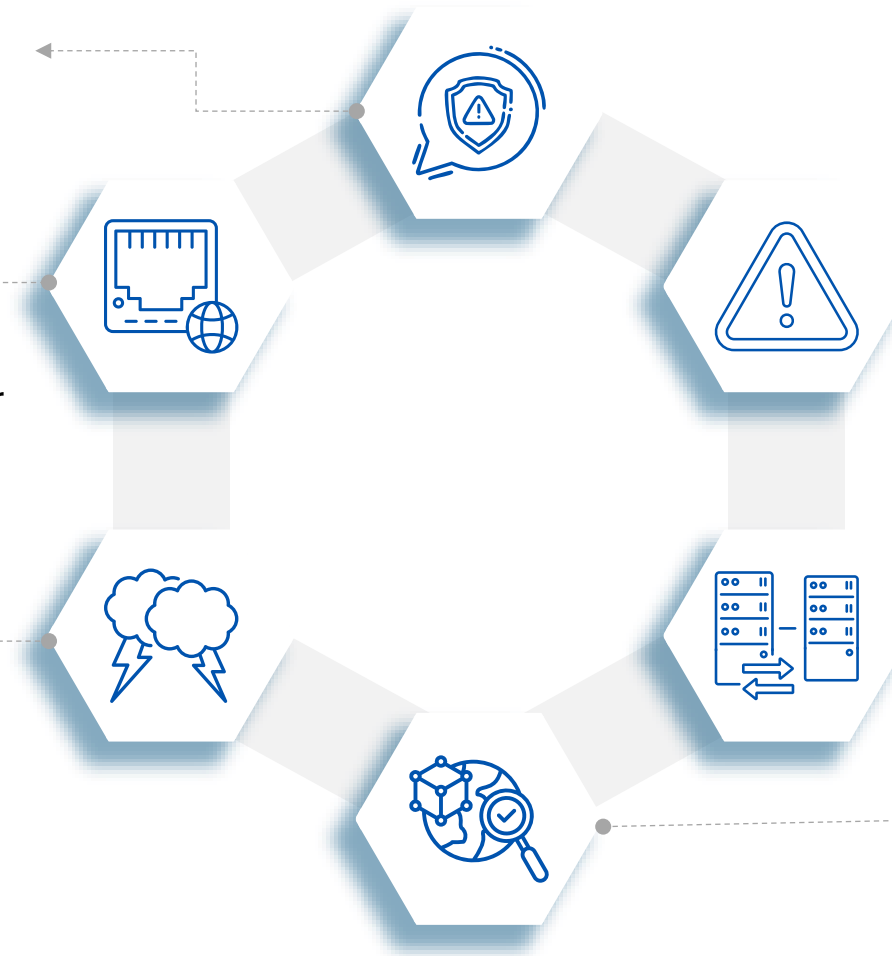
Reporting & Analytics

Network Access Control

Detection of suspicious device behaviour (unauthorized access attempts, tunnelling, abnormal traffic).

Automatic switch-port blocking for suspicious devices to prevent network compromise.

Broadcast storm detection with auto-isolation or blocking of affected switch ports.



Alerts for abnormal bandwidth usage, CPU/memory spikes, unexpected resource consumption.

Reverse proxy detection and early indicators of potential intrusions.

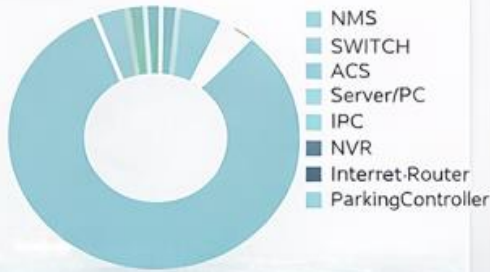
Behaviour-based anomaly analysis to identify deviations from normal network patterns.

Dashboard



Dashboard

1496



6

Critical

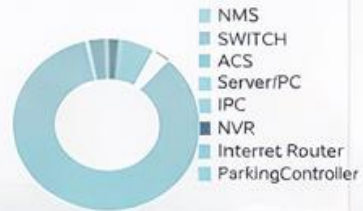
1

Major

102

Minor

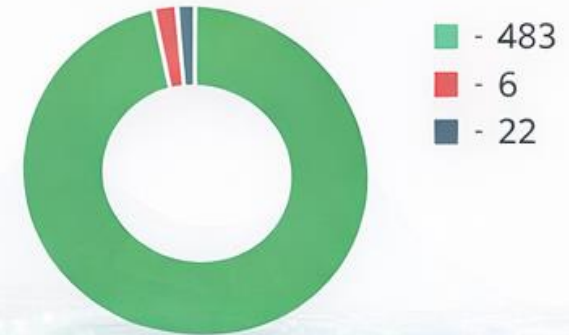
Device Type



Device Status



Device Status



Device Down Status

Last 1hour

Group	Device Name	IP	Parent
IPC	SW-Tower-14 R...	192.168.99.122	N/A
IPC	SW-Tower-No-17	192.168.5.192	N/A
IPC	V1000-B-19/20 Te...	192.168.5.202...	N/A
IPC	188.1.9 SL	192.168.3	N/A
IPC	GARDEN AREA TOWE...	192.168.3	N/A

Group View

IPC Total: 445

Up: 422

Down: 3

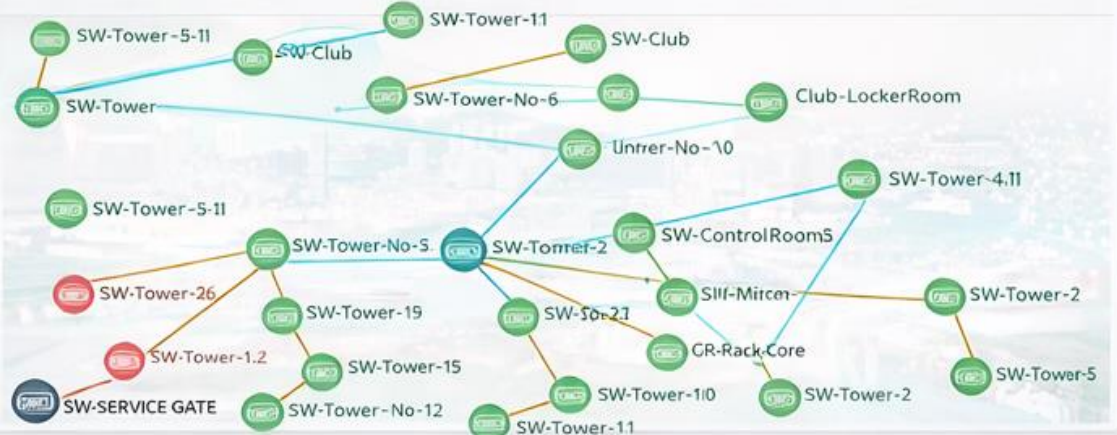
Unreachable: 20

PartSat Deiso Total: 835

33

20

Topology





THANK YOU